



Who's the guilty one?



Brotherly love!



It's three o'clock in the morning!

# Junior-Senior Play

## THE BOARDING HOUSE REACH

"The Boarding House Reach" was the name of the three-act comedy which was presented on November 11 and 14 by the Junior and Senior classes.

For many years now, thirteen-year-old Wilbur Maxwell, (Jerry Miller) had wanted a bicycle. He'd dreamed of peddling through town, getting fond gazes from the girls, but still he couldn't persuade Mama (Mary Ellen Simon) and Papa. (Paul Smith) to get him one. So when Pop was called away for a week-long business trip, Mama was persuaded to go with him for sort of a second honeymoon and the house was left in charge of sister Connie (Anita Schwedhelm) and sister Betty Lou (Janet Fox), Wilbur got his idea. He'd make his own money and buy his own bicycle. He'd open up a boarding house right there.

So into the paper went the ad, and the whole Maxwell house was soon crawling with people. First came Luke Burns (Richard Werner), a sort of walking encyclopedia, then Mr. Mott (Leon Bierstetel), who never said a word all through the play. Then came Ninety-Volt Jones (Steve Kimball), a beat-up pug, and his trainer, Rudy (Norbert Rademacher). They were followed by Mr. Potter (John Heckman) an insurance salesman and Limpy McGuire (Ron Hatfield) with his wife, Nora, (Sharon Pinkney). Now every room in the house was full, Wilbur was doing a bang-up business and then Mama and Papa Maxwell came dragging home--Papa forgot his brief case.

From there on, there was one mess after another. Papa had an important business conference the next morning, but he had to sleep on the floor. Things were in a turmoil. Finally, it was discovered somebody in the house was a bank robber, and poor Papa was mistakenly taken off to the clink. But the real bank robber was found, the boarding house business stopped, Papa broke down and bought Wilbur a bicycle, and everything ended happily.

Others in the cast included Hercules Nelson (Roger Freund), Bernadine Smith (Theresa Cook), Aunt Mary (Condra Hull), and Connelly (Robert Spitzley).



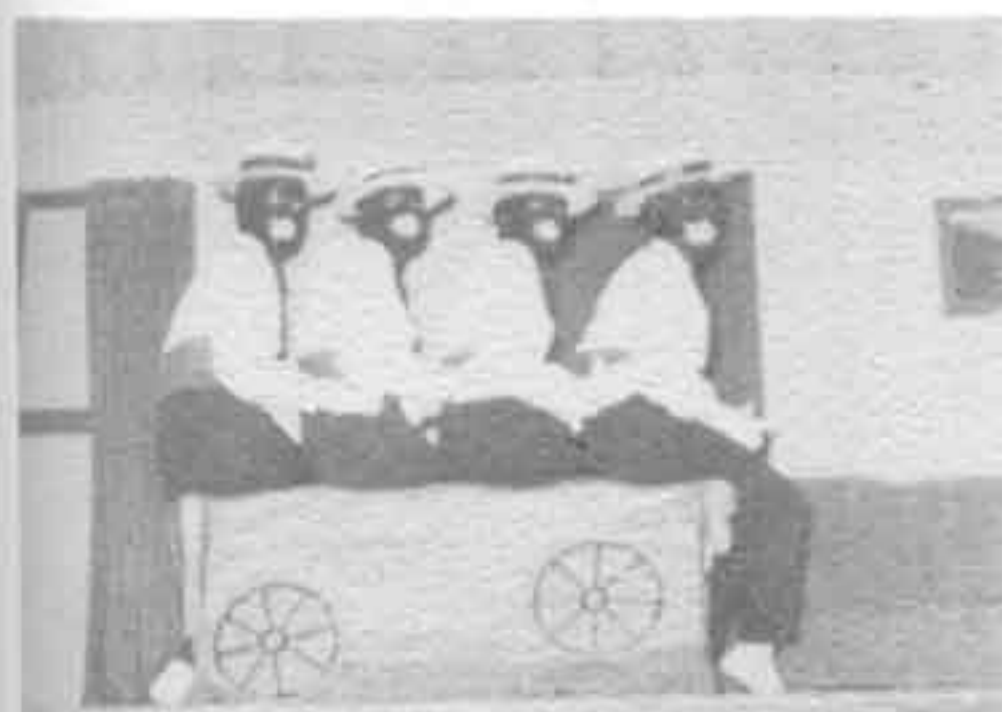
It's a fact!



What's up Doc?



Ow, it hurts!



Wagon Wheels

## DUSKY BELLES between-act entertainment

Fat Wood

Rosy Simon

Doris Theis

Dolores Schneider



Who's making with the noise?