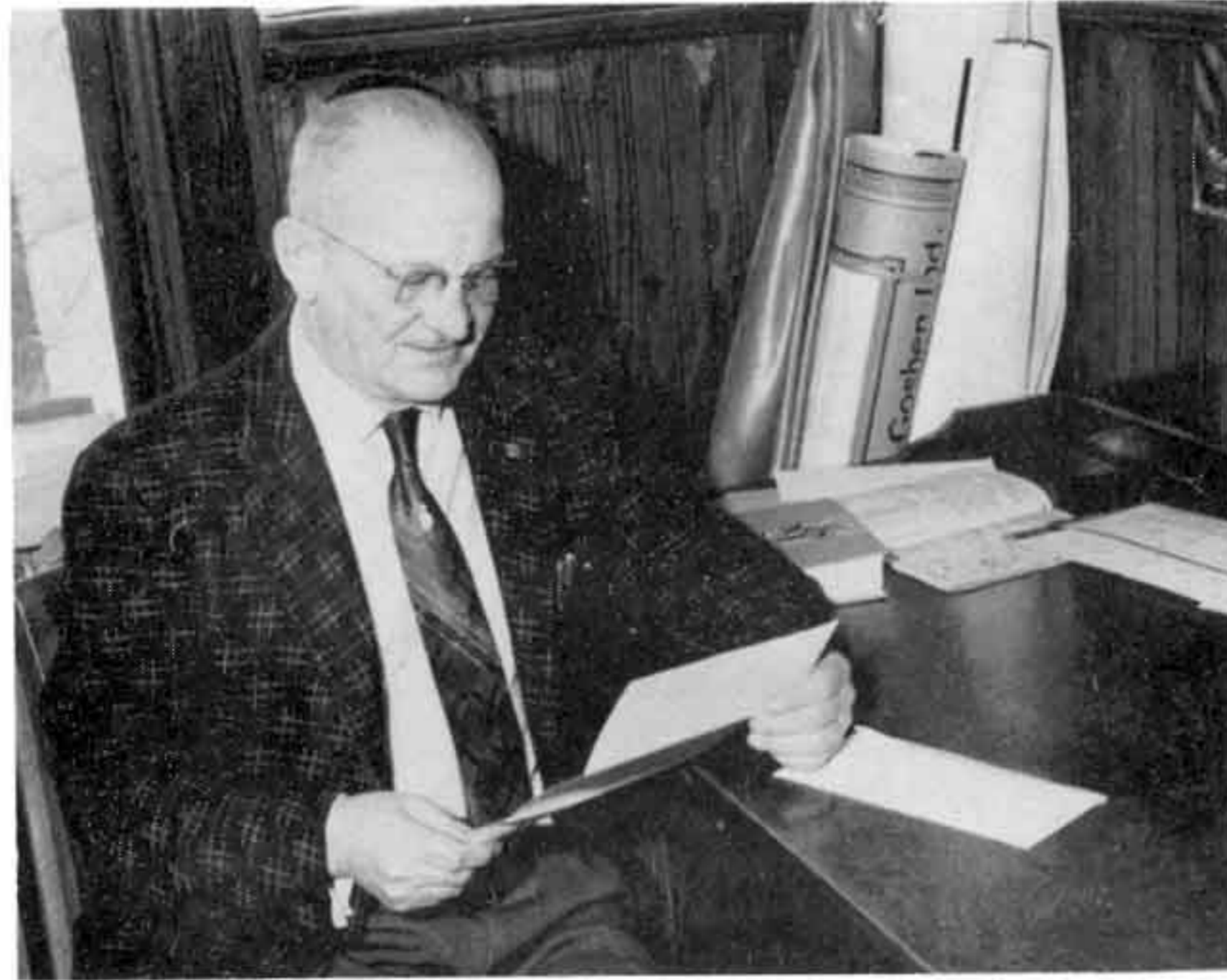


Superintendent's Message



Build on the best that's in you;
Only the best will do.
Tear down the shabby motives
That compromise the true.

Philip F. Schiska

School



Board

The school board for the 1956-1957 term is composed of Gerald Pinkney, Treasurer; Louis Thelen, Trustee; Clem Kramer, Secretary; Stephen Kimball, President; Philip Schiska, Superintendent; Charles Cook, Trustee.