



DAY AND NIGHT SERVICE

CARO MOTOR SALES

C. A. KLEIN, Manager

Phone 122

Caro, Mich.

ARNOLD M^CCOMB 23/4SE 21/4E 11/4 S

FARM MOORE TELE. # 95111

R. #5 CARO MICH. 125

C A R O

TELEPHONE DIRECTORY
Of Telephones Installed to MARCH 1, 1940

Moore Telephone System

GENERAL OFFICES, CARO, MICHIGAN—A HOME INSTITUTION
See Colored Sheets for Classified Business Listings—Very Convenient



**FURNITURE
FLOOR
COVERINGS**

—
**ELECTRIC
REFRIGERATORS
RANGES
and
RADIOS**

—
"Largest Stock in
the Thumb"

W. H. GUNSELL

CARO

Phone 115

MICH.



FRANK SUMP
TYLER 4-1241 for Earl Butler

MOORE TELEPHONE SYSTEM

1

Caro Auto Parts Co.

WHY PAY MORE

WHEN YOU CAN BUY FOR LESS ?

Most Complete Stock of Auto Parts & Accessories in Thumb

We Can Supply Parts for All Makes of
Cars, Trucks or Tractors.

We Specialize in Ford Parts and Bearings.

Also Fordson Tractor Parts and Bearings.

Tires, Tubes, Batteries, Radiators, Connecting Rods, Axle
Shafts, Generators, Starters, and a Complete
Line of Ignition Parts.

A Complete Line of Toledo Products

Perfect Circle Piston Rings

All brake lining bought from us installed on your bands free.

AUTO GLASS INSTALLED

Machine Ground and Polished

We Buy and Sell Used Farm Machinery, Tools and Parts.

We will save you money on House and Barn Paint,
Varnish and Stain. All Colors.

ALWAYS IN THE MARKET FOR CARS

Any Make—Any Model—Any Condition

WE BUY SCRAP IRON, METAL, FURS and HIDES

Highest Prices Paid

YOU'LL SAVE BY DEALING WITH US

Open Evenings for Your Convenience

We are located across from the Moore Telephone Office

Phone 305, Caro

ED. LERMAN, Prop.

Try Our New DX Lubricated Gasoline

For a Square Deal, Stop at the "Willing Service"

I. A. BENDER, Proprietor

DAY AND NIGHT

PHONE 101

We Rebuild Starters, Generators, Magnetos

THUMB AUTO PARTS

WHOLESALE AND RETAIL

AUTOMOTIVE PARTS

PITTSBURGH PAINTS and GLASS

Phone 225

418 West Frank St.

Caro, Mich.

IMPROVE YOUR HOME

Of First Importance Is

PLUMBING and HEATING

AMERICAN RADIATOR AIR CONDITIONING

WINKLER AUTOMATIC CONTROLLED STOKERS

FARM HOME WATER SYSTEMS

Modernize with Quality Fixtures

F. H. A. Terms

PHONE, WRITE OR COME IN !

GEORGE GEE

253 S. State St.

Phone 290

CARO LUMBER YARD

Lumber and Building Materials

U. S. G. FORTIFIED LINE ASPHALT ROOFING AND
SHINGLES

BUILDERS' HARDWARE AND PAINT

Screens Combination Doors

F. E. ATWOOD, Prop. Phone 385 605 N. State St.

A

A.A.A. Automobile Club of Mich., ofc. at 348 N. State St.	
W. J. Block, Manager	333
Service Garage, F. C. Striffler, Day Service	275
Night Service	164
Abstract, Mutual Title Co., 425 N. State St.	107
Abstract Office, A. O. Purdy, 224 N. State St.	413
Adams, Archie, res., 214 Ellis St.	380
All Nite Lunch, 212 S. State St.	359
Allore, H. L., res., 905 W. Frank St.	477
Anderson, Carl, res., 334 Norman St.	3562
Andrews, Claude, res., 112 Quinn Ave.	217
Applegate, Mrs. Myrtle, res., 400 E. Frank St.	446
American Agriculture Chemical Co., 588 River Street ..	373
Armstrong, Dr. F. H., dentist, 147 W. Lincoln St.	121
Armstrong, Dr. F. H., res., 329 W. Bush St.	1212
Arnold, Nelson, farm, $\frac{3}{4}$ S 5 $\frac{1}{2}$ W	92115
Art & Duff, Fast Motor Freight, 435 Ellington St.	171
Ashbreck Standard Service, corner State & Grant Sts.	473
Asher, Howard, Chrys.-Ply. Gar., 507 E. Burnside ..	361
Asher, Howard, res., 218 Gibbs St.	332
Ashmun, Reginald, res., 517 N. Almer St.	395
Atwood, F. Ellett, res., 309 Madison St.	250
Ayre, Walter, res., 722 S. State St.	224

B

Babcock, Mrs. Helen, farm, 1 $\frac{1}{4}$ NE $\frac{1}{4}$ E	93013
Baguley, Irl L., grocery, 121 N. State St.	430
Balch, Elvin, res., 208 W. Grant St.	235



OUR STORE IS AS NEAR AS YOUR TELEPHONE

BAGULEY'S GROCERYCALL **430**

Ball, A. C., res., 117 N. State St.	452
Barriger, Wm., 2NE 5 $\frac{1}{2}$ N $\frac{1}{4}$ E	9482
Bates, Mrs. Minnie, res., 219 Fremont St.	480
Bechtel, W. H., Mfg. Co. & Store, 129 N. State St.	437
Bell, Floyd, farm, 2NE $\frac{1}{2}$ N	9463
Bender, C. J., res., 451 North State Street	388
Bender Gas Station, N. State St.	101
Bender, Milton J., farm, $\frac{1}{2}$ N 3 $\frac{1}{2}$ W 2 $\frac{1}{4}$ N	95411
Betzing, Rev. E. J., Sacred Heart Rectory, W. Frank St.	280
Beyette, Earl, res., funeral home, 411 S. State St.	334
Beyette, Mrs. Ernest, beauty shoppe, Wahjamega	93911
Beyette, Robert, res., 118 East Washington Street	239
Bieth, Geo. J., res., 426 S. State St.	326
Bieth Implement Co., 331 Montague Ave.	163
Bills, Leo, res., 324 Fremont St.	1302
Birdsell, Merrill, farm, $\frac{3}{4}$ SW 2 $\frac{1}{2}$ W	9213
Black, Geo., farm, 3 $\frac{1}{2}$ NE $\frac{7}{8}$ E	93513
Black, Mrs. R. W., res., 723 S. State St.	9022
Blasius, C. L., farm, 2SW	9392
Bliss, Mrs. E. Noble, res., 227 W. Bush St.	124
Block, W. J., res., 132 N. Almer St.	3332
Bougher, C. L., res., 651 N. State St.	288
Bowles, Frank, farm, 1 $\frac{1}{4}$ NE	9114
Bradley, Ernest, 3 $\frac{1}{2}$ NE $\frac{1}{4}$ N 3 $\frac{1}{2}$ NE $\frac{1}{4}$ E	94711
Branch Office Secretary of State, 425 N. State St.	410
Brigham, Fred, Farm, $\frac{3}{4}$ SE 6 S 3 $\frac{3}{8}$ W	90614
Brock, John, res., 82 Gilford Rd.	493
Brock, Wm., farm, $\frac{1}{2}$ N 1 $\frac{1}{2}$ W $\frac{1}{8}$ S	90521
Broomfield, C., res., 530 Pearl St.	161
Brown, Floyd, res., 315 Montague Ave.	366
Brown, Kenneth L., res., 639 W. Frank St.	427
Brown, Richard, res., 235 Ellis St.	313
Brown, Robert, 147 W. Burnside St.	337
Buck, H. J., res., 102 Madison St.	435
Bureau of Social Aid, courthouse	190
Bush, Lewis, 3 $\frac{1}{2}$ NE $\frac{5}{8}$ N	9355
Butcher, Homer, farm, 2NE 2N	9464
Byington, Otto, res., Wahjamega	9394

JOHN COLLON UNDERTAKER Funeral Home

Ambulance Service

Lady Attendant

PHONE 165

C

Calbeck, Mrs. Maude, res., 625 W. Lincoln St.	134
Campbell, Frank B., res., 228 W. Sherman St.	185
Capling, Esther's Floral Shop, 142 E. Lincoln St.	167
Caro Auto Parts, Edw. Lerman, opp. telephone office ..	305
Caro Community Hospital, 507 W. Burnside St.	308
Caro Creamery, station and store, 314 N. State St.	297
Caro Fair Grounds, secy's office (during fair)	340
Caro Farmers' Co-operative Elevator, 416 Green St. ...	296
Caro Farmers' Co-operative Elevator, 416 Green St. ...	201
Caro Floral Company, 508 W. Burnside St.	222
Caro Gas & Oil Co., 3/4 SW	146
Caro Hardware, 164 N. State St.	120
Caro Hatchery, Walter Ayre, 722 S. State St.	224
Caro High School, office, E. Frank St.	189
Caro Home Appliances, 227 N. State St.	347
Caro Lumber Yard, F. E. Atwood, 605-607 N. State St.	385
Caro Motor Sales, 419 N. State St.	122
Caro Post Office, Lincoln St.	208
Caro Poultry Plant, 219 E. Green St.	145
Caro Refineries Inc., 410 Green St.	422
Caro Supply Co., 118 W. Lincoln St.	274

Caro State Hospital for Epileptics, Wahjamega, Mich.—

Supt. office, Dr. R. L. Dixon	19920
Supt. residence, Dr. R. L. Dixon	19966
Asst. Supt. office, Dr. W. W. Dickerson	19955
Asst. Supt. residence, Dr. W. W. Dickerson	19923
Steward's office, Kenneth G. Kerr	19922
Steward's residence, Kenneth G. Kerr	419
General Supervisor's office, John B. Austin	19950
General Supervisor's residence, John B. Austin ...	19928
Social Service office	19921
Receiving Hospital, supervisor's office	19956
Store	19925
Power House	19927
Chief Engineer's residence, F. Starkey	19929
Asst. Chief Engineer's residence, H. Shubel	19943
Farm Supervisor's residence, D. McGlocklin	19928

W. A. FORBES CO.**LUMBER, COAL and BUILDING SUPPLIES**

Steel Roofing

Steel Sash

Phone 482

Carpenter, Mrs. C. H., farm, $\frac{1}{2}$ E $2\frac{3}{4}$ SE 3S	95311
Carpenter, Wm., farm, $\frac{3}{4}$ SW $1\frac{7}{8}$ W	91912
Cass River Circuit Parsonage, 2NE 6N	9484
Chatterson, Mrs. Myrta, res., 520 W. Burnside St.	181
Churchill, George, res., 237 E. Sherman St.	133
City Hall, Water Works Office	278
City Market, Deming & Parsons, 109 S. State St.	404
Clark, F. L., office, 425 N. State St.	175
Clark, Floyd L., res., 335 Fremont & Sherman Sts.	1303
Clark, W. N. Co., office, 222 Columbia Ave.	119
Cody, E. M., res., 410 E. Frank St.	244
Cole, Claude, farm, 2SW 5W $\frac{1}{8}$ S	9123
Cole, Maurice, farm, $3\frac{1}{2}$ SW 4W $\frac{1}{4}$ S	91213
Cole, William, $3\frac{1}{2}$ SW $4\frac{1}{4}$ W	91211
Coleman, Mrs. Dora A., farm, $3\frac{1}{2}$ SW 2W	94422
Coleman, Ella, farm, $2\frac{1}{2}$ SW 6W $\frac{1}{4}$ N	93213
Coleman, Geo. W., Watrousville, $3\frac{1}{2}$ SW $4\frac{1}{8}$ W	91221
Coler, Edw., farm, $\frac{1}{2}$ N $4\frac{1}{2}$ W $1\frac{1}{2}$ N	95711
Colling, Mrs. David, farm, $\frac{1}{2}$ W $8\frac{1}{2}$ N $\frac{1}{4}$ W	90311
Colling, Elevator, $\frac{1}{2}$ W $8\frac{1}{2}$ N $\frac{1}{4}$ E	9032
Colling, Geo., farm, $\frac{1}{2}$ W $8\frac{1}{2}$ N $1\frac{1}{8}$ E	90314
Colling, Ross, farm, $\frac{1}{2}$ W $8\frac{1}{2}$ N $\frac{7}{8}$ E	90323
Collon, John, Funeral Director, 315 S. State St.	165
Colwood Store, Mrs. K. M. Miller, $3\frac{1}{2}$ NE 6N	9295
Cookingham, Floyd, res., 118 Quinn Ave.	2515
Cook, Earl, res., 235 W. Sherman St.	2062
Cooper, H. W., res., 144 W. Sherman St.	418
Cottrell, Edw., res., 514 Sheridan St.	218
Cowan, Robt., farm, $\frac{1}{2}$ N $2\frac{1}{2}$ W $3\frac{1}{2}$ N	9383
Crittenden, Mrs. Anna, res., 206 Montague Ave.	2195
Croft, Mrs. A. N., res., 115 Wells St.	253
Cross, Adelbert, res., 118 Wells St.	303
Crouch, Mrs. Mary, res., 144 E. Congress St.	3604
Culbert, M. F., farm, $\frac{1}{2}$ N $4\frac{7}{8}$ W	9563
Cummings, A. B., res., 120 Adams St.	458
Cummins, Lillian, 142 Norman St.	230
Cunningham, Leonard, res., 327 Montague Ave.	3564

PRIMROSE COAL
"YOU'LL SEE THE DIFFERENCE"

CARO FARMERS' CO-OP. ELEVATOR CO.
 Phones 201 and 296

Curry, Hampton, garage, 217 W. Frank St.	248
Curry, Hampton, res., 520 W. Frank St.	320
Cutler, Ed., farm, 2NE	94611
Cutts, J. Frank W., farm, $\frac{3}{4}$ SW 4W	92113

D

Darbee, F. W., farm, $1\frac{7}{8}$ NE	9092
Darbee, F. W., garage, Oliver dealers, $1\frac{7}{8}$ NE	9094
Darbee, Vern, farm, $\frac{1}{2}$ E $4\frac{1}{4}$ N	91811
Daugherty, Mrs. Jane, res., 140 Gilford St.	4073
Davis, Donald J., farm, $\frac{3}{4}$ SW $\frac{3}{4}$ W	92112
DeBoever, Gust, farm, $3\frac{1}{2}$ N $\frac{3}{4}$ W	9412
Deming, L. B., farm, $\frac{1}{2}$ E $1\frac{1}{8}$ N	9182
Deming, L. B., Wood & Dray, 227 Montague Ave.	442
DeNoyelles, Donald, res., 104 W. Bush St.	1512
DeNoyelles, Harry, farm, 4NE 6N	9293
Detroit, Caro & Sandusky R. R., gen. office, Wells St. ..	170
Detroit, Caro & Sandusky R. R., freight station	409
Detroit Edison Co., office, 196 N. State St.	467
Hydro Plant, 1507 S. Colling Road	453
Warehouse, 120 E. Sherman St.	104
DeVerna, Donald, res., 511 W. Lincoln St.	1824
Dibble, H. O., res., 410 N. Almer St.	110
Dietz, James, farm, $3\frac{1}{2}$ NE $\frac{1}{2}$ N $\frac{7}{8}$ NE	9454
Dillon's Tavern, $3\frac{1}{2}$ NE 6N	9232
Donahoe, Clarence, farm, 2NE 6N	9483
Dorothy Jeanne Beauty Shop, 216 N. State St.	204
Dosser, Mrs. Pearl, farm, 5NE 5N	9155
Duprey, Frank, farm, 2NE	9093

E

Eastham, John, res., 125 Kinyon St.	342
Elder Oil Co., 884 S. State & Hooper Sts.	306
Elite Beauty Shoppe, 227 N. State St.	226
Elliott, Sherman, farm, $3\frac{1}{2}$ NE $3\frac{1}{2}$ N $\frac{1}{4}$ W	94612
Ellwanger, Donald, res., 518 Gilford Rd.	336
England, Mrs. J. J., Quinn Ave. and Sheridan Sts.	2512

LEE HUSTON FUNERAL HOME, Inc.

Ambulance Service

LADY ATTENDANT

PHONE 139

England, W. J., farm, $\frac{1}{2}$ W $6\frac{1}{2}$ N $\frac{1}{2}$ E	9493
Ensign, Jay, Garage, $\frac{3}{4}$ SW	125
Ensign, Jay, res., 311 Hooper St.	2134
Esler, Wm., farm, 2SW 3W $\frac{3}{4}$ S	94432
Esther's Floral Shoppe, 142 E. Lincoln St.	167

F

Fairman, Carrie & Libbie, farm, 2SW $2\frac{3}{4}$ W	9444
Farm Security Office, State Savings Bank Bldg.	346
Farmer, Claude, farm, $3\frac{1}{2}$ NE 3N $1\frac{1}{2}$ E	91512
Fenster, Abraham, Pickle Factory, Montague Ave.	243
Fenster, Sam, res., 622 W. Lincoln St.	127
Findlay, Maxine, res., 192 W. Gamble St.	141
Fitzgerald, Wm., res., 221 W. Sherman St.	210
Fitzstephens, Bernard, 303 Court St.	162
Forbes, Mrs. Clara Harris, res., 124 S. Almer St.	126
Forbes, Guy, res., 101 Bates St.	421
Forbes, W. A. Co., coal and lumber, 429 Montague	482
France, Ernest, res., 209 W. Grant St.	102
French, Rev. J. Leslie, Pres. Manse, 309 N. Almer St.	438
Frey, E. S., res., 315 W. Frank St.	331
Fritz, Dr. T. J., Dentist, 202 N. State St.	412
Fritz, Dr. T. J., res., 109 E. Grant St.	405
Fullmer, F. B., res., corner State and Ellington Sts. ..	1712
Fullmer Freight Lines, 235 Ellington St.	171

G

Gabert, Fred A., farm, $\frac{1}{2}$ E $2\frac{3}{4}$ SE $\frac{1}{8}$ E	95212
Gallery, A. D., res., 327 N. Almer St.	160
Gallery, Jas. A., res., 114 Gibbs St.	135
Gamble Store, 302 N. State St.	490
Gee, Geo., Plumbing Shop, 225 S. State St.	290
Geib, A. J., Almer and Sherman Sts.	338
Gekeler, Herb, res., 745 N. State St.	187
Gibbs, Chas., res., 322 Gibbs St.	255
Gibbs, Ray, res., 621 Pearl St.	498
Gibson, Jessie, res., 627 Gibbs St.	154

W. A. FORBES CO.

Exclusive Johns-Manville Dealers. Asbestos Shingles and Siding
Rock Wool and Building Board Insulation

PHONE 482

Gildart, W. H., res., 111 Wells St.	137
Gillman Grocery, 307 N. State St.	117
Gillman, Edw., res., 316 W. Sherman St.	379
Goodell, Ruby, res., 213 W. Washington St.	293
Graham, John, farm, 3 $\frac{1}{2}$ NE 2N $\frac{1}{2}$ E	9353
Graham, Melville H., farm, 2NE 5N $\frac{1}{8}$ E	94812
Greenhouse, Mrs. S. W. Holden, 508 Burnside St.	222
Griffin, Dr. W. W., office, 151 W. Lincoln St.	370
Gunsell, Fred, res., 719 S. State St.	324
Gunsell, Geo., res., 220 W. Frank St.	1064
Gunsell, Lewis, farm, 2SW 4W $\frac{1}{4}$ S	9423
Gunsell, Wm., furniture store, 130 W. Burnside St.	115
Gunsell, William, res., 323 N. Almer St.	136

H

Hanes, Clare, $\frac{1}{4}$ NE	486
Hanes, Geo., res., 246 E. Grant St.	2405
Haist, D. M., farm, $\frac{1}{2}$ W $\frac{1}{2}$ N	9052
Handy, Dr. John, M. D., office, 116 E. Frank St.	266
Handy, Mrs. John E., res., 308 S. State St.	365
Harmon, Albert, res., 204 Ellis Street	451
Harris, Harold, res., 665 W. Burnside St.	238
Hartman, Ray, res., 502 W. Lincoln St.	382
Hazel, Russel, res., 323 W. Bush St.	414
Heidemann, Louis, res., 123 E. Congress	3602
Heinz, H. J. Co., Caro Pickle Station	462
Henry, Roy, farm, 3 $\frac{1}{2}$ SW 2 $\frac{3}{4}$ W	94221
Henry, Wm., 2 $\frac{1}{2}$ S 5 $\frac{1}{2}$ W	94223
Herman, Hattie, res., 421 N. Almer St.	355
Hess, John, res., $\frac{3}{4}$ E	9523
Higgs, James B., veterinary, res., 120 Howard St.	440
Higley, C. M., res., 240 Gilford St.	2514
Hile Brothers, farm, 2SW 5W	93211
Hile, Madge, res., 204 Congress St.	416
Hill, Guy G., office, attorney-at-law, McNair Block ...	350
Hill, Lester R., Orchard Hills Farm, 3 $\frac{1}{2}$ SW 3W	9422
Hillman, H. J., 121 S. State St.	316
Hi-Speed Station, corner State & Sherman	463
Hograever, Mrs. Carrie, farm, 1 $\frac{1}{4}$ NE $\frac{7}{8}$ E	9112

MR. FARMER —

When Having Live Stock to Dispose of Ship Them Through
CARO SHIPPING ASSOCIATION
 OR WILL BUY FOR CASH SHIPPING EVERY MONDAY
ERNEST G. LUDER, Phone 1515

Holdburg Bros., Meat Market, 144 N. State St.	488
Holden, Mrs. S. W., 508 W. Burnside St.	222
Hooper, L. A. drugs and express office, 128 N. State St.	202
Hooper, L. A., res., 215 W. Bush St.	299
Hotel Montague, office, corner State and Frank Sts. ...	400
Howell, Mrs. Alice, res., 207 W. Burnside St.	448
Howlett, Dr. R. B., dentist, 168 N. State St.	439
Howlett, Dr. R. B., res., 415 Pearl St.	322
Howlett, Dr. R. R., M. D., office, McNair Block	390
Howlett, Dr. R. R., M. D., res., 804 W. Frank St.	3902
Hudson, Russell, res., Heating and Air Conditioning, 181 N. State St.	294
Humes, John, farm, 2NE 3N	9462
Humm, Rudolph, farm, 1/2N 4 1/2W 2 1/4N	9546
Hunt, Edgar, res., 114 Pearl St.	1062
Huntley Frank, store, 1/2N 2 1/2W	95611
Huston, Lee, Funeral Home, Inc., res., 327 S. State St.	139
Hutchinson, Fred, farm, 3 1/2NE 3N 1E 3/4N	9154

I

Ickes & Avery, auto collision, 135 E. Burnside St.	354
Independent Coal Co., Earl Cook, near M. C. Fr. Sta. ...	206
Information Clerk, Moore Telephone System	271
Ingalsbe, H. L., res., 621 W. Burnside	1823

J

Jacob, Walter, res., 721 Columbia St.	415
Jacot, Ruth, res., 420 E. Frank St.	142
Jakubowski, Tofil, farm, 1/2E 2 3/4SE 2 1/4E 3/8S	9514
Janks, Fred, farm, 3 1/2NE 3N 2E	9152
Johnstone, Wm., farm, 2NE 5N 1/2W	94813
Jones, Mrs. E. A., res., 402 W. Frank St.	479
Joyce, Geo., Dry Cleaning, 125 W. Burnside St.	103

K

Kauffman, J. L., Super Market, 129 Burnside St.	321
Kauffman, J. L., res., 833 W. Frank St.	475
Keeney, Frank, res., 615 W. Burnside St.	144
Kelley, Frank, res., 233 E. Sherman St.	3272

MIKE'S BODY and RADIATOR SHOP**COLLISION WORK and AUTO GLASS SERVICE****-775 North State Street****Phone 351****Caro, Michigan**

Kern & Ransford, law office, Wixson-Dyer Block	456
Kern, R. O., res., 314 S. State St.	378
Kerr, Kenneth, res., 609 S. State St.	419
Kimler, F. A., farm, 1/2N 2 1/2W 4 1/2N	9382
Kimmel, Thos., farm, 1 1/2N 2 1/2W 1/2N	93812
Kinde, Carl, res., 332 N. State St.	432
Kinde, Frank, res., 126 Hamilton St.	371
Kinde, Frank & Son, meat market, 316 N. State St.	495
Kinnel, Wm. H., farm, 3 1/2SW 4 1/8W 1/8S	9124
Kinsey, Karl, res., 516 N. Almer St.	116
Kirk, James, farm, 2SW 5W 1/2N	9325
Kirk, James, farm, 2 1/2SW 6 1/4W	9322
Kirkpatrick, Carl, res., 373 Wells St.	118
Kirkpatrick, Harry, res., 637 W. Burnside St.	164
Kirridge, Mrs. Alice, res., 154 Millwood St.	2402
Kitchen Bros. (Texaco Serv.) 884 S. State St.	152
Kitchen, Wilfred, res., 321 W. Lincoln St.	445
Klea, Wm., farm, 1/2E 4 1/2N	91832
Klein, C. A., garage, 419 N. State St.	122
Klein, C. A., res., 623 W. Burnside St.	417
Klein, Geo., res., 208 Quinn Ave.	461

L

Lane, Henry, farm, 1 1/2N 4 7/8W	95712
Lapeer Production Credit Ass'n, McNair Bldg.	237
Lappin, R. J., res., 214 Quinn Ave.	157
Larsen, Andrew, res., 510 Gibbs St.	364
Larsen Hardware, 164 N. State St.	120
Lassiter, Wiley, farm, 1/2W 5 1/2N 1W	91331
Laur, Earle, farm, 1/2W 1 1/8N	9074
Lawrence, Roy, vulcanizing shop, 427 N. State St.	431
Lee & Cady, E. Burnside St.	376
Lerman, Ed., res., opp. telephone office	3052
Lewis, Huron, farm, 3 1/2SW 3 7/8W	94212
Lewis, I. M., res., 635 W. Burnside St.	1825
Liberacki, Alex., res., 203 W. Sherman St.	312
Lockwood, Mrs. Albert, res., 101 Pearl St.	169
Loranger, John, attorney, 161 1/2 N. State St.	260

Where Quality, Service and Price Meet

MEREDITH & SON GROCERY

Phone 403

Deliveries: 8:00-10:00-2:00-4:00

Luder, Ernest, res., Gilford St.	1515
Lynn, Horace, farm, $\frac{3}{4}$ SW $4\frac{3}{4}$ W	9212

M

MacLachlan, John, res., 233 Bush St.	277
Maier, Edward J., res., 533 N. Almer	227
Manke, Marguerite, Beauty Service, 219 S. State St. ...	314
Mantey, Carl, res., 308 W. Bush St.	211
Mantey, Fritz, farm, $2\frac{1}{2}$ N $3\frac{1}{4}$ W	95431
Mantey, Wm., res., 115 Peninsular St.	301
Marshall Electric, 113 Howard St.	153
Mattlin, Earl, res., 619 W. Frank St.	287
Maupin, Chas., farm, $\frac{1}{2}$ N $3\frac{1}{2}$ W $\frac{1}{4}$ S	9565
May, C. B., farm, $1\frac{1}{4}$ N $\frac{1}{3}$ W	92411
Maytag Caro Co., W. M. Wilkinson, 217 N. State St. ..	285
McComb, Arnold, farm, $\frac{1}{2}$ E $2\frac{3}{4}$ SE $2\frac{1}{4}$ E $1\frac{1}{4}$ S	95111
McComb, B. H., farm, $\frac{3}{4}$ SW $\frac{1}{2}$ W	9432
McCor.-Deer. Imp. Dealer, H. R. Hyde, 617 N. State St.	184
McCorkle, George, farm, $\frac{1}{2}$ N $\frac{3}{4}$ W	9053
McCrea, Bruce, farm, $3\frac{1}{2}$ N $\frac{3}{4}$ E	9466
McDurmon, F. S., res., 302 N. Almer St.	372
McEldowney, Russell, farm, 1E $\frac{1}{2}$ S	9372
McGilp, A., Caro Health Service, 226 N. Almer St. ...	114
McHerron, Dr. J. D., office and res., 140 W. Lincoln St.	196
McNeil, Alva, farm, 2NE $4\frac{1}{2}$ N $\frac{1}{4}$ W	94811
McNeil, Wesley, farm, $2\frac{1}{2}$ NE 7N	9234
Merrill, Dr. E. H., M. D., office, 147 W. Lincoln St. ...	478
Merrill, Dr. E. H., M. D., res., 415 N. Almer St.	4783
Metcalf, A. C., store, Ellington, $3\frac{1}{2}$ NE $\frac{1}{2}$ N 2NE	9082
Metcalf & Schrader, oil station, 700 N. State St.	394
Metcalf, Maurice, res., 302 W. Grant St.	159
Meredith, A. R., grocer, 105 S. State St.	403
Meredith, A. R., res., 122 Gibbs St.	447
Michigan Bean Co., 600 N. State St. (Tusc. Elevator) ..	273
Michigan Fertilizer Co., 390 Columbia Avenue	420
Michigan Oil Co., filling station, 200 E. Frank St.	197
Michigan State Highway Maint. Garage, Hooper St. ...	172
Donald Ellwanger, maint. supt. res. 518 Gilford Rd.	336

AUTO COLLISION**RADIO REPAIR**

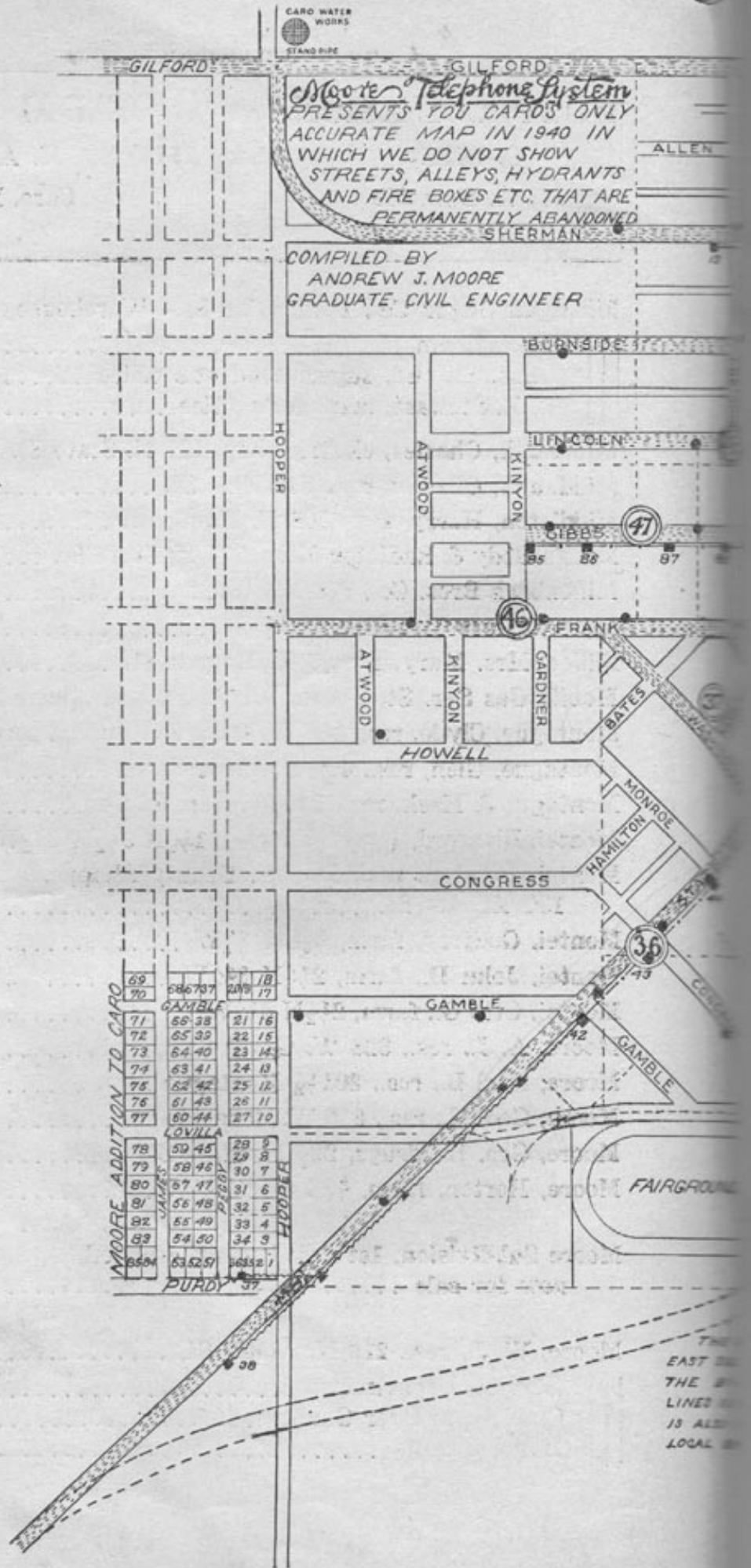
C. IKES
135 E. Burnside

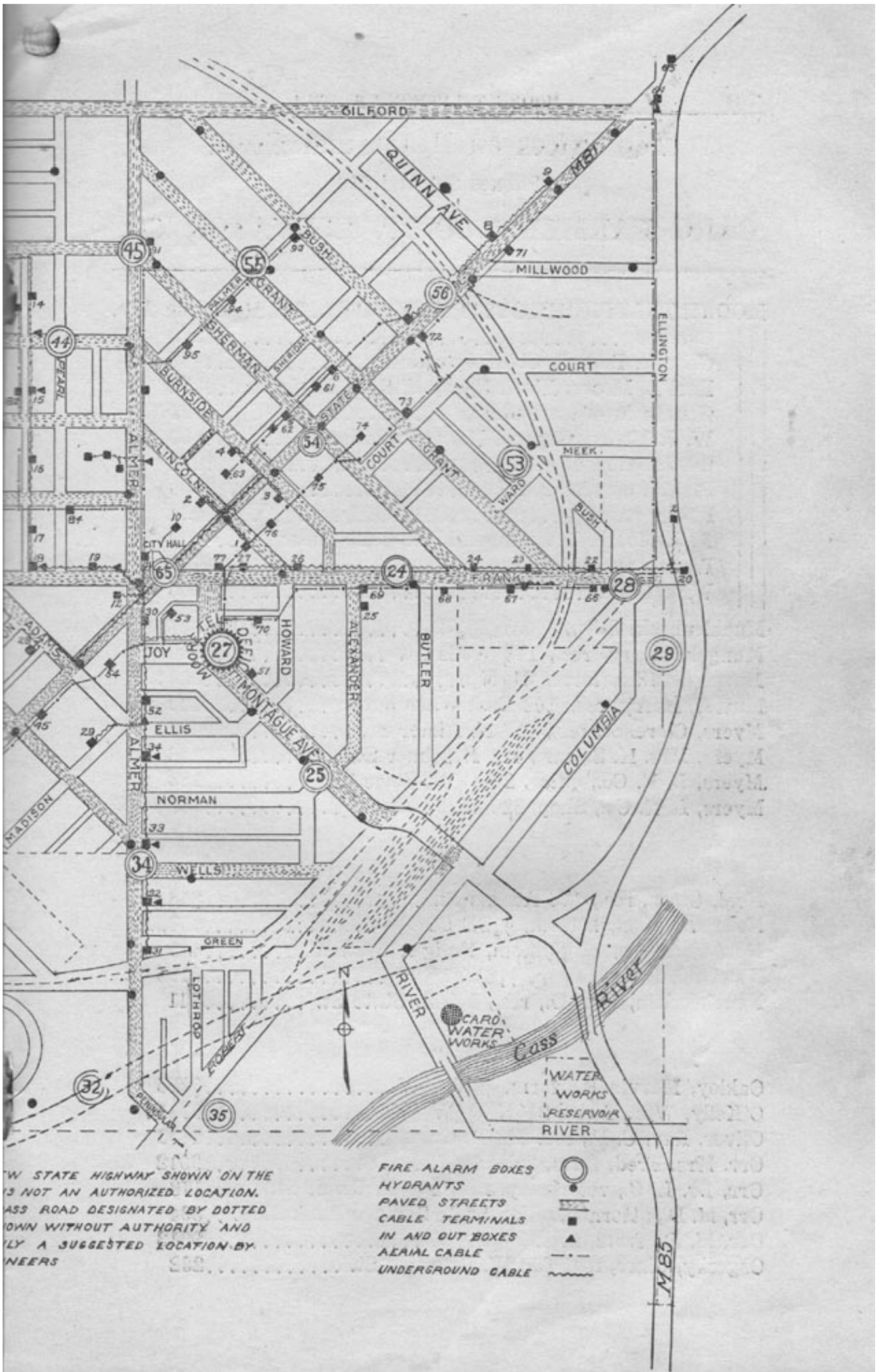
Phone 354

H. AVERY
Caro, Michigan

Michigan Sugar Co., Peninsular St.—Warehouse	4231
Store Room	4232
Chas. Sieland, superintendent's office	4233
L. R. Stewart, manager's office	282
Middaugh, Charles, electric shop, 107 N. State St.	231
Middaugh, Charles, res., 219 Ellis St.	2312
Middleton, Harry, res., 508 E. Frank St.	483
Mike's Body & Radiator Shop, 775 N. State St.	351
Millenbach Bros. Co., 778 N. State St.	325
Miller, James T., 2SW 1/2W 1/8S	93913
Miller, Mrs. Mary, res., 5 N. Hooper St.	9054
Mobile Gas Ser. Sta., corn. W. Frank and Almer Sts.	188
Montague, Clyde, res., 333 W. Bush St., Refrig. service	344
Montague, Glen, res., 409 S. Almer St.	258
Montague & Hack, res., 140 W. Gamble St.	286
Montei, Blenford, (Reavey farm), 1 1/2N 3 1/2W 3 3/4N	9543
Montei, Clayton, res., Modern Beauty Shoppe, 130 Adams St.	113
Montei, Godfrey, farm, 3/4SW 1/2W	9435
Montei, John D., farm, 2 1/2N 3 3/4W	95414
Montei, Otto G., farm, 2 1/2N 4 1/4W	9545
Moore, A. J., res., 328 W. Grant St.	396
Moore, Earl L., res., 201 1/2 Montague Ave.	363
Moore, Geo. H., res., 616 W. Burnside St.	245
Moore, Geo. H., drugs, 201 N. State St.	105
Moore, Horton, farm, 3/4S 5 1/2W 1/2N	92123
Moore Subdivision, 1st new home completed, now for sale	257
Moore, W. J., res., 219 N. Almer St.	580
Service Department	597
Club Room Over Garage	594
Home Garage	595

We will be glad if our subscribers will occasionally untwist the cords leading to their telephone. Telephones cannot give as reliable service when the cords are twisted and knotted.





TWO STATE HIGHWAY SHOWN ON THE
 MAP IS NOT AN AUTHORIZED LOCATION.
 ALL ROAD DESIGNATED BY DOTTED
 LINES IS OWNED WITHOUT AUTHORITY AND
 IS ONLY A SUGGESTED LOCATION BY
 THE ENGINEERS

- FIRE ALARM BOXES
- HYDRANTS
- PAVED STREETS
- CABLE TERMINALS
- IN AND OUT BOXES
- AERIAL CABLE
- UNDERGROUND CABLE



MB5

Top Prices on Beans and Grain

Phones 201 and 296

CARO FARMERS' CO-OP. ELEVATOR CO.

MOORE TELEPHONE SYSTEM, Ofc. Bldg., 201 Montague Ave.

Cashier	272
Georgia Parsell, Chief Operator	496
Earl L. Moore, Elect. Equip. & Rate Engineer ..	392
Garage in office building	128
W. J. Moore, General Manager, office	499
Information Clerk	271
Plant Superintendent	300
Power Room	254
A. J. Moore, Treasurer and Civil Engineer	389
Warehouse	594
Wire Chief	300
Muehlenbeck, Edw., $\frac{3}{4}$ SW $5\frac{1}{4}$ W	92111
Munger, Harry, res., 148 Wells St.	449
Murphy, Mike, farm, $3\frac{1}{4}$ N	9244
Mutter, Harry, res., 102 East Washington	429
Myers, Clarence, res., 417 N. Almer St.	374
Myers, Mrs. H. S., res., 431 N. Almer St.	236
Myers, L. E. Co., office, $227\frac{1}{2}$ N. State St.	123
Myers, L. E. Co., Shop, 820 W. Frank St.	289

N

Neal, Chas., res., 126 Adams St.	348
Nelson, Emanuel, farm, $\frac{3}{4}$ SE 5S 4W	90622
New York Central System, Freight Station	409
Nowland, Daniel, farm, $\frac{3}{4}$ SW $1\frac{7}{8}$ W	9195
Nuechterlein, Rev. O., res., 509 S. State St.	341

O

Oakley, Marvin H., farm, $\frac{1}{4}$ N $\frac{1}{2}$ W	9055
O'Kelly, Wm., farm, $2\frac{1}{2}$ N $1\frac{1}{2}$ W $\frac{1}{4}$ S	93814
Oliver, Rev. C. F., res. 228 E. Grant	2403
Orr, Mrs. Fred, farm, 2NE $1\frac{1}{2}$ E	9012
Orr, Dr. L. C., veterinary, res., 240 E. Grant St.	178
Orr, M. D., attorney, office, State Savings Bank Bldg. ..	304
Orr, M. D., farm, 2NE $1\frac{1}{2}$ E $\frac{1}{2}$ S	9013
Osgerby, Clare, res., 658 W. Burnside St.	232

PALACE MEAT MARKET

HOLDBURG BROS.

Choice Meats, Groceries, Fruits, Vegetables & Sea Foods in Season

PHONE 488

WE DELIVER

CARO, MICH.

"BEER BY THE BOTTLE, CASE or KEG"

P

Palmer, Carl, drugs, 206 N. State St.	481
Palmer, Carl, res., 232 W. Burnside St.	129
Park, James, res., 303 Gibbs St.	476
Park, Margaret M., res., 412 W. Lincoln St.	108
Park, Robert Co., warehouse, 305 Wells St.	436
Park, S. R., res., 604 W. Burnside St.	295
Parsell, Harry, painter and decorator, res., 1 $\frac{1}{4}$ NE	9302
Parson, John, farm, 3E 1-3 S	9512
Pattison, Nate, farm, 3 $\frac{1}{2}$ NE	9453
Pearl's Beauty Shoppe, res., 146 W. Lincoln St.	283
Penney, J. C. Co., store, 325 N. State St.	228
Peoples State Bank, 145 N. State St.	474
Perrin, R. W., farm, 3 $\frac{1}{2}$ SW 4W $\frac{3}{4}$ S	9122
Perry, Bert M., 3 $\frac{1}{2}$ NE 5N 1E $\frac{1}{2}$ N	91521
Perry, Dorr, farm, 3 $\frac{1}{2}$ NE 4N 2E	94722
Peterhans, Ray, res., 545 N. Almer St.	4074
Petiprin, Clair, farm, $\frac{1}{2}$ N 2 $\frac{1}{2}$ W 2 $\frac{3}{4}$ N	93821
Petrie, Dr. W. P., office, 116 E. Frank St.	220
Petrie, Dr. W. P., M. D., res., 320 S. State St.	397
Pike, E. E., farm, $\frac{1}{2}$ N 4 $\frac{1}{2}$ W $\frac{5}{8}$ N	9566
Pomeroy, Bert., res., 143 E. Congress St.	402
Promenchenkel, Nick, farm, 2NE 4N $\frac{1}{4}$ E	94822
Purdy, A. O. res., 403 N. Almer St.	292
Purdy, Edward, farm, $\frac{1}{2}$ N 1 $\frac{1}{4}$ W	90512
Purdy, Fred, res., 302 W. Burnside St.	425
Purdy, H. H., Dodge-Plymouth Sal.-Serv. 115 N. State	270
Purdy, H. H., res., 326 S. State St.	329
Pursell, O. S., farm, $\frac{1}{2}$ N 3 $\frac{3}{4}$ W	95612
Putnam, Claude K., res., (hay buyer) 200 E Washington	469
Putnam, Claude, farm, 3 $\frac{1}{2}$ SE 4 $\frac{1}{2}$ S	95313
Putnam, Harold, farm, 4 $\frac{1}{4}$ NE	9455
Putnam, Ray, farm, $\frac{1}{2}$ W 6 $\frac{1}{2}$ N $\frac{3}{4}$ E	9494

Q

Quinn, Timothy, res., 422 Pearl St.	387
--	-----

SCHWEIGERT & RADCLIFFE

POULTRY BUYERS

Phone 291

SEE US FOR PRICES

CARO, MICH.

211 EAST FRANK ST.

R

Randall, Howard, farm, $\frac{1}{2}$ W $5\frac{1}{2}$ N $\frac{3}{4}$ E	9185
Ransford & Kern Law Office, Wixson-Dyer block	456
Ransford, Maurice, C., res., 145 E. Lincoln St.	247
Raymond, Fred, res., 725 S. State St.	386
Raymond, Jay, Standard Service, 301 S. State St.	264
Raymond, Kenneth, res., 244 E. Bush St.	455
Raymond, Milford, Gas Station, 220 S. State St.	155
Reavey, B. B., res., 604 Luder Rd.	4072
Reed, Willard, res., 534 E. Frank St.	2192
Refiners Outlet Serv. Sta., 1004 Cor. State & Ell. Sts.	132
Reid, Ernie E., Dayton Store, $\frac{3}{4}$ SE 5S 5E	9536
Retail Merchants Credit Bureau, 441 N. State St.	384
Rickwalt, Henry, farm, 2NE	90922
Riley, E. J., res., 739 S. State St.	398
Riley's Hardware, 205 N. State St.	408
Riley, Ralph, res., 221 W. Grant St.	191
Ringle, Matt, res., 129 Wells St.	214
Robertson, Mrs. Ethel, 421 W. Sherman St.	168
Robinson, R. L., farm, $\frac{1}{2}$ W $5\frac{1}{2}$ N $1\frac{1}{4}$ W	9384
Rogers, Mrs. Gertrude, farm $3\frac{1}{4}$ SW $4\frac{1}{8}$ W	91222
Romaine, August, Jr., $3\frac{1}{2}$ N $1\frac{3}{8}$ W	9413
Romaine, David, farm, $3\frac{1}{2}$ N $1\frac{1}{4}$ W	94123
Romaine, Joe, farm, $6\frac{1}{2}$ N $1\frac{1}{2}$ W	91312
Romaine, Mrs. Susan, farm, $4\frac{1}{2}$ N $1\frac{5}{8}$ W	94111
Rosbolt, Wm. O., farm, $\frac{3}{4}$ SW 3W $\frac{1}{2}$ S	9214
Ross, Edgar, farm, $\frac{1}{2}$ E $2\frac{3}{4}$ SE 3S	9532
Ross, Mrs. Grant, farm, $\frac{1}{2}$ W $5\frac{1}{2}$ N 2W	9385
Rounds, Oliver, farm, $3\frac{1}{4}$ NE	94511
Rowe, Thos. A., res., 508 N. Almer St.	369
Ruby, Jack, res., 677 Gibbs St.	138
Runkel, Rev. A. F., res., 208 W. Burnside, M. E. Pars.	457
Rutherford, Robt., res., 120 E. Adams St.	158
Russell, Boyd, res., 101 W. Gilford St.	343
Russell, Grover L., farm, $\frac{1}{2}$ N $4\frac{1}{2}$ W $2\frac{7}{8}$ N	95413
Ryan, Wm., 320 E. Frank St.	180

REFINERS OUTLET

BOB WILSON, Manager

Corner State and Ellington Sts.

Telephone 132

**THE STATION THAT REALLY
BROUGHT THE PRICE OF GOOD
GASOLINE DOWN IN CARO**

**HAVE YOU BEEN FAIR WITH YOURSELF
AND TRIED IT ?**

S

Sage, Clifton (Stub) res. 527 S. State St.	176
Sage, Richard, farm, $\frac{1}{2}$ N $3\frac{1}{2}$ W $\frac{5}{8}$ N	95713
Salgat, Charles, farm, $\frac{1}{2}$ N $2\frac{1}{2}$ W $3\frac{3}{4}$ N	93813
Satchell, Harold, farm, $3\frac{1}{2}$ NE $\frac{1}{2}$ N $1\frac{3}{4}$ NE	9086
Savage, Dr. L. L., M. D., office, 147 W. Lincoln St.	478
Savage, Dr. L. L., M. D., res., 521 W. Burnside St.	4782
Schiffman, Ernest, farm, $\frac{3}{4}$ N	92413
Schmeltz, James, res., 230 N. State St.	485
Schrader, Allah, 208 Fremont St.	368
Schrader, Allah, Oil Station, $\frac{3}{4}$ SW	146
Schrader & Metcalf, Oil Station, 700 N. State St.	394
Schriber, Mrs. Clara, farm, $1\frac{1}{2}$ N $1\frac{1}{4}$ W	9073
Schuckert, Fred, res., 125 N. State St.	149
Schultz, Alvin, 127 Hamilton St.	3452
Schwaderer, J. H., res., 400 W. Grant St.	263
Schweigert, Roy, res., 300 E. Frank St.	2912
Schweigert & Radcliffe, poultry buyers, 211 E. Frank	291
Stringer, Morris, res., 700 W. Frank St.	148
Secor, Mrs. David, farm, $\frac{1}{2}$ W $1\frac{1}{4}$ N	9072
Seeley, Frank, res., 114 Hamilton St.	441
Seeley, Mrs. Maud C., res., 636 W. Frank St.	426
Shafer, Fred, farm, $3\frac{1}{2}$ NE $\frac{1}{8}$ N	94512
Shaw, Helen, Beauty Shoppe, 231 N. State St.	362
Sheridan, John, res., 427 S. State St.	328
Sheridan, Mrs. Timothy T., farm, $\frac{1}{2}$ N $4\frac{1}{2}$ W $1\frac{3}{4}$ N ...	9573
Shubel, Sidney, res., 265 North State Street	242
Shubel, Sidney, Electric Service, 267 North State Street	276
Shurlow, Ralph, res., 133 Millwood Ave.	1452
Sieland, Chas., farm, $\frac{1}{2}$ W $6\frac{1}{2}$ N $\frac{3}{4}$ E, Carl Sieland ...	9495
Sieland, Chas., res., 220 E. Washington	349
Sime Oil Co., Inc., 1NE	215

Smith, Alvin, farm, 3½NE 3½N	92912
Smith, Carl C., farm, 3½NE 5N	9292
Smith, Mrs. C. L., farm, 1½SW	9024
Smith, Mrs. H. H., res., 302 S. State St.	464
Smith, Lehr, res., 431 Madison St.	459
Smith, M. R., res., 202 Quinn Ave.	284
Smith, Wm., farm, 2NE 6¼N ½E	92924
Snell, Fred O., res., 205 W. Bush St.	192
Southgate, George, res., 194 Wells St.	3565
Southworth, Bert, farm, 3½NE 3N ½E	91511
Sparling, Jennings, res., 720 N. State	233
Spaulding, Mrs. A. C., res., 121 S. State St.	3453
Spaulding, Charles, res., 603 W. Burnside St.	186
Spaulding, Mrs. E. O., res., Gilford St.	234
Spaulding's Store, 134 N. State St.	468
Squires, Howard, res., 625 S. State St.	298
S. T. & H. Oil So., serv. station, S. State & Almer Sts. .	166
State Savings Bank, 222 N. State St.	205
Steele, Dan, res., ¾SW ¼W	2132
Steele, Dr. G. H., farm, ½N, 2¾W	9564
Stern, Joe, 603 E. Frank St.	209
Stern, Joe., res., 605 E. Frank St.	2092
Stewart, L. R., res., 302 W. Bush St.	279
St. Mary, Frank, office, State St.	111
St. Mary, Frank, res., 518 W. Sherman St.	393
St. Mary, Joe, res., 224 Gibbs St.	269
Stone, Maurice, res., 220 W. Bush St.	194
Stone, W. A., farm, 2SW 4W ¼S	9425
Stonehouse, Mrs. W. P., farm, ½N 3½W 1½N	9544
Strand Theater, State St.	377
Striffler, F. C., Buick and Chev. Gar., 344 N. State St. .	275
Striffler, Fred, res., 217 W. Burnside St.	406
Swogger, L. C., 223 E. Sherman St.	2404
Symons Frozen Foods Locker System, N. State St. ...	140

T

Taggett, C. A., farm, ½N 3½W	9562
Tait, Worthy, res., 227 W. Sherman St.	352
Taylor, Clarence, farm, 2NE 1½N	9465
Taylor, Howard, farm, 2½N	92412
Teichman, Erwin, res., 484 W. Frank St.	358
Tennant's Grocery, 517 N. State St.	454
Terry, Mrs. Agnes L., farm, 2SW 2½W	9323
Thumb Auto Parts, 418 W. Frank St.	225

Thumb Electric, office, 267 North State Street	276
Oliver, J. W., serviceman, 785 North State Street ..	131
Wyrick, Clay, serviceman, 216 Monroe Street ...	323
Thumb Laundry, 141 N. State St.	174
Tomlinson, Carl, farm, 3½NE ½E	9352
Tomlinson, W. W., res., 536 W. Lincoln St.	281
Tonkin, Wm., farm, 1½N 4⅓W	9572
Toohy, M. J., res., 3½SW 4W	91212
Trisch, Louis or John, farm, ½N 5¾W	95621
Trudo's Bakery & Market, 131 N. State St.	470
Turner, Clarence, farm, 3½NE ½N 2NE	9085
Turner, Floyd, 325 W Bush St.	265
Turner, Frank, 171 N. State St.	259
Turner, Jarvis, res., 734 N. State St.	411
Turner, Stanley, farm, 3½NE ½N 2NE ½W	9084
Tuscola County Advertiser, office, 324 N. State St. ...	109
Tuscola Co. Farmers' Mutual Ins. Co., 238 N. State St. .	173
Tuscola County Social Welfare, office, Courthouse ...	249

Tuscola County Offices and Institutions

Tuscola County Agric. Conservation Assoc.	198
Agricultural Agent's Office, courthouse	330
Circuit Judge, office, courthouse	267
County Clerk, office, courthouse	207
County Drain Commissioner, office, courthouse ...	443
County Garage, office, 120 Millwood Ave.	381
County Prosecuting Att'y, ofc., 425 N. State St. .	229
County Road Commissioner, off., 120 Millwood Ave. .	221
County Sheriff, office, jail	100
County Treasurer, office, courthouse	460
Judge of Probate, office, courthouse	261
Register of Deeds, office, courthouse	434
School Commissioner, office, courthouse	484
Infirmary, County Farm, ¾NE ¾N	241

V

Valley Chemical Co., 221 W. Sherman St.	210
VanTine, Carl, res., 552 Pearl St.	335
VanTine's Grocery, 143 State & Almer Sts.	143
VanWinkle Tavern, 1¾SW	318
Vastbinder, Frank R., drugs, 112 E. Frank St.	494
Vastbinder, Frank R., res., 696 W. Burnside St.	112
Vaughn, Theodore, res., 120 Fremont St.	401
Vollmar, Carl, farm, ½W 5½N ½W	94913

COOPER WALLPAPER STORES

Handsome — Nationally Advertised
WALLPAPERS from 5c to 35c Roll

Suitable for Any Home — Every Room
 Call and See Our Big Display

135-137 N. Baum Street
 Saginaw

715 Saginaw Street
 Bay City

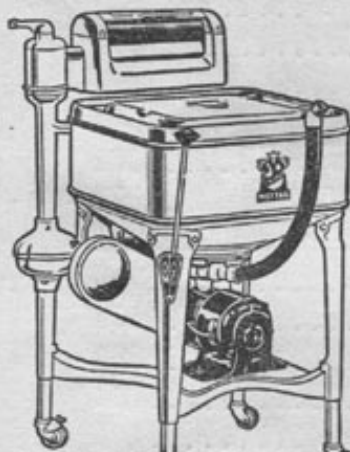
MOORE'S DRUG STORE

A Convenient Place to Buy the Best in
DRUG STORE MERCHANDISE

Sickroom Needs, Sundries, Rubber Goods, Stationery
 A PRESCRIPTION STORE

Let Me Be Your Druggist

Phone 105



MAYTAG CARO CO.

We Service All Makes of Washers and Let
 You Use a New Maytag in Your Home While
 Your Washer is Being Repaired.

SMALL DOWN PAYMENTS
Maytag Leads the World
 EASY TERMS

W. M. WILKINSON, Dealer
 227 N. State Phone 285

CARO CREAMERY

Wholesale and Retail Dairy Products

PASTEURIZED BUTTER — MILK and CREAM

QUALITY ICE CREAM

E. J. RILEY, Prop.

CARO

Phone 297

W

Waldon, Frank, farm, $\frac{1}{2}$ W 2N $\frac{1}{2}$ W	9415
Walker, Jack, res., 202 Gilford St.	183
Wark, Mrs. Lizzie, farm, $3\frac{1}{2}$ SW $3\frac{3}{4}$ W	9424
Watrous Hardware Co., 301 N. State St.	179
Watrous, Leland, res., Almer and Sherman Sts.	212
Watrousville Elevator, Hart Bros., $3\frac{1}{2}$ SW 4W $1\frac{1}{4}$ S ..	9125
Weaden, James H., farm, $\frac{1}{2}$ E $2\frac{3}{4}$ SW $2\frac{1}{4}$ E	95112
Wean, Mrs. Harriett, res., 117 Gibbs St.	433
Wells, Chas., 208 Hooper St.	3093
Wells Grocery Store, 341 N. State St.	246
Wells Hotel Restaurant, 337 N. State St.	307
Wells, Lionel, res., $3\frac{1}{2}$ NE $\frac{1}{2}$ N 2NE	9083
Wells, Sampy, farm, $\frac{3}{4}$ SE 3S 3SE	9533
West, Mrs. Chas., farm, $\frac{3}{4}$ SW 2W $\frac{1}{2}$ S	9443
Western Auto Associate, 200 N. State St.	156
Western, John, res., 226 Ellis St.	150
Western Union Telegraph Office, 128 N. State St.	262
Whetstone, Oscar, res., Monroe St.	3095
Whildin, D. U., res., 520 W. Lincoln St.	2742
White, Mrs. A. T., farm, $3\frac{1}{2}$ NE $\frac{7}{8}$ N	9452
Whittenburg, Arthur, farm, $1\frac{1}{2}$ N	9246
Whittenburg, Frank, farm, $\frac{3}{4}$ SE $2\frac{1}{2}$ W	90613
Wightman, W. C., res., 550 W. Lincoln St.	1822
Wilber, Norris W., res., 527 N. Almer St.	4075
Wills, Bates, ofc., McNair Block	357
Wilsey, Mrs. Elmer G., res., 302 Gibbs St.	465
Wilson, Orville, res., 227 E. Grant St.	497
Wilson, Mrs. Geo., res., 163 Millwood Ave.	2406
Winterfield, E. L., res., 641 W. Sherman St.	315
Witkovsky, Wm., Farm, $\frac{3}{4}$ SW $1\frac{1}{8}$ W	94312

Y

Yens, Henry, farm, $2\frac{1}{2}$ N $\frac{3}{4}$ W	93811
Young, Ed., res., 250 E. Bush St.	2193

Z

Zemke, Mrs. Edyth, res., 215 Fremont St.	268
Zemke, Otto, res., 207 W. Adams St.	472
Zemke, Rudolph, res., 418 W. Frank St.	375
Zemke's Store, 225 N. State St.	193

GENERAL INFORMATION ABOUT THE MOORE TELEPHONE SYSTEM



Bills and Payments

Bills are sent monthly, and are payable when received. They cover your telephone service for one month in advance, and toll charges up to and including the 20th day of the preceding month. Non-payment of the bill within 15 days after the bill's date forces us to discontinue service without further notice. A charge of \$1.50 is made for restoring your service after it has been once cut off or a 25c charge is made if we have been compelled to deny your service because of delinquent payments. If it is impossible for the customer to pay his bill within 15 days, further credit of one week may be arranged with the Treasurer. This request for extension of time should be made before the service is cut off, to avoid inconvenience and the expense of re-connecting your service. All customers are held responsible for long distance calls made over their phones.



Toll Lines

Moore Telephone System owns its toll lines to all towns in Tuscola county, and also reaches all adjoining counties: Huron, Sanilac, Lapeer and Saginaw and the City of Saginaw. Through its connection with the Michigan Bell Telephone Company, service can be given to all parts of the civilized world.



Will You Help Us ?

Sometimes our poles and lines are damaged when cars or trucks are driven into the poles. Frequently the drivers do not report the damage they have done to us. We will pay \$1 for the first information in about such accidents. The driver's name and automobile number are especially wanted in these cases. Will you help us ?

Maintenance and Trouble Work

We are anxious to give good service, but occasionally subscribers have trouble with their phones. Please report such trouble promptly to the operator and we will do our best to fix it promptly. If you do not get prompt service on such repairs, please call, or drop a postcard to, W. J. Moore, General Manager, who will see that the matter gets prompt attention. No rebate is given for phones out of service 36 hours or less. Prompt restoration of your service depends on your prompt report of the trouble. Your co-operation is requested, for your benefit and ours.

—0—

Broadcasting Notices

We will broadcast for you an announcement of Special Sales, demonstrations or other events of general interest. All rural subscribers are called, by one of our operators (or your own employee if desired) will make the announcement. All rural subscribers will be called, under this plan, at a charge of \$3.50. Village subscribers alone will be called for \$2.00. Both sets of subscribers will be called for \$5.

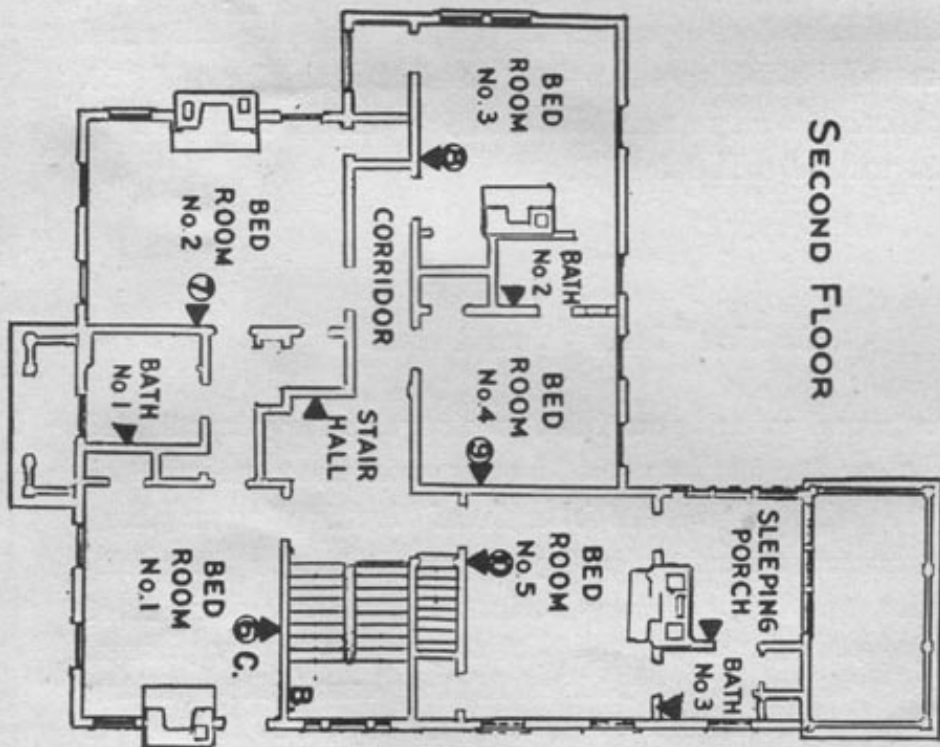
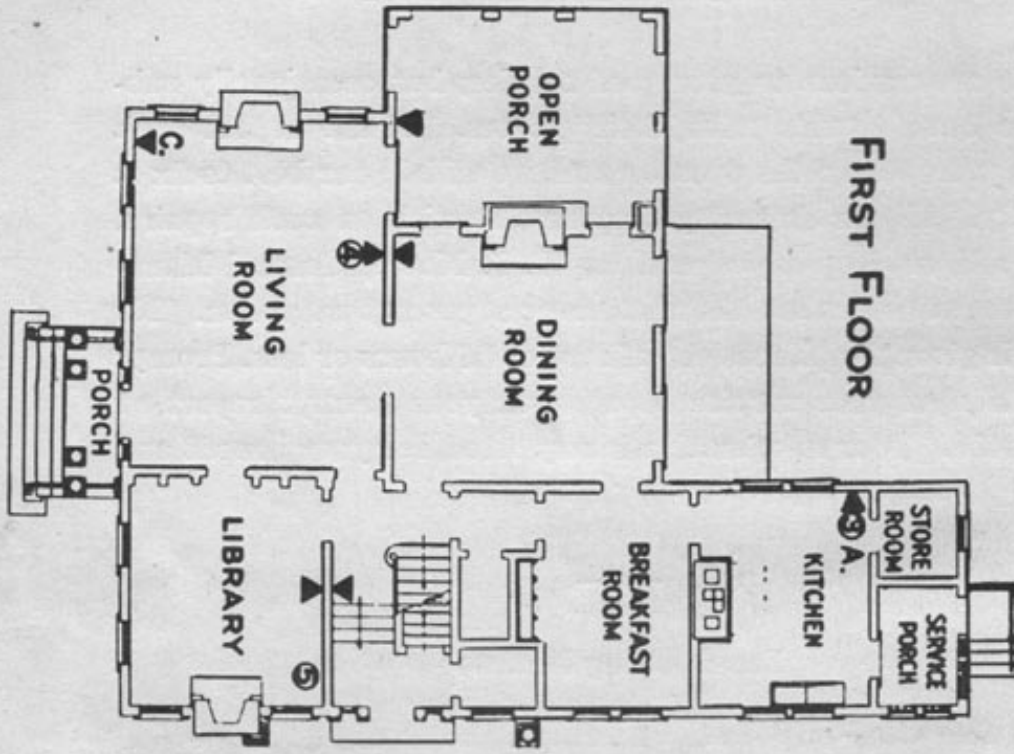
—0—

Do You "Lend" Your Phone ?

You buy, and we sell you, telephone service for yourself and your family, or for employees and owners in the case of business phones. When a practice is made of "lending" your phone to others who are not subscribers you are paying for their telephone service, and we are losing business. Does this seem fair? Many companies, in such cases, insist on putting in pay phones, so that all who call must put a nickel in the phone before getting central. We would not like to have to do this, but it may be necessary in the case of subscribers who disregard this rule repeatedly.

A. T. & T. CO.
SALES & DEV. ENG.
NOVEMBER 1929

ILLUSTRATIVE TELEPHONE SERVICE ARRANGEMENT
750-A-P.B.X. SYSTEM
TWO CONSECUTIVE CENTRAL OFFICE TRUNKS (FAMILY USE)
ONE NON-CONSECUTIVE CENTRAL OFFICE TRUNK (SERVICE USE)



A great telephone executive has said that "in the not too far distant future, telephones will be located within easy reach of all persons at all times, making communication easy, not only between rooms and floors in one's own home or office, but also to any point within the community, state, nation, or in fact the whole world." Even now it is as easy to talk from one's own home or office to friends in London, England, or other foreign cities, as to nearby points, and it is surprising the number of calls that are being made to distant places.

The cut on the opposite page is a reproduction of a Private Branch Exchange plan issued by the American Telephone and Telegraph Company, which they suggest for the well appointed home. The diamond symbols show the convenience outlets, the circles show the telephones. The hand telephones may be carried from place to place and plugged in other convenience outlets, thus a few telephones might serve all rooms of the home or office if the subscriber prefers to economize. Plugging telephones in at every convenience outlet would make indeed a complete arrangement. Mr. Walter Gifford, president of the American Telephone and Telegraph Company has a similar system in his beautiful home with telephones in all rooms. There are thousands of such installations throughout the country.

We are in a position to furnish, at moderate cost, private branch exchanges, also burglar alarm systems for homes or business places. With the burglar alarm system we offer, contacts may be put on all doors and windows, to operate when forced open. It will also operate in case of a broken window glass in homes or stores, operating contacts can be placed under rugs, etc. With this system the sheriff's office is automatically notified without any necessary attention from the owner other than setting the switch to put the alarm in and out of operation. If interested in the burglar alarm system or private branch exchange please get in touch with the Moore Telephone System.

We also wish to call your attention to a change in operating methods: The Michigan Public Service Commission has recently ordered that a method of operation be used that makes it unnecessary to publish the telephone numbers of the private branch exchange stations at Wahjamega even though they have been published for years in accordance with orders as given by the management of the Farm Colony. The commission's orders will, of course, be complied with as soon as the new system can be arranged for, which will be within a few weeks. This new plan has already been carried out in the private branch exchange in the writer's home and elsewhere.

At this time we are offering two types of private branch exchanges only, and we are not prepared to furnish any other kind. The one has an automatic board on the premises of the subscriber, and in connection with it is an attendant's cabinet for an operator. No operator is needed for calls between the stations within the private branch exchange, but for calls outside, an attendant's cabinet is needed as a part of the equipment. This must have an operator furnished by the lessee to take care of all calls to or from the private branch exchange. The other type of private branch exchange we offer is intended for use in residences, hospitals, and hotels, if they are not too large. The first is known as an automatic, the second as a residence type of private branch exchange.

A residence may also be served by the automatic type described above, but it is considerably more expensive. The residence type, so-called, that we are offering has a circuit leading from each telephone in the residence to the city central office, so that the lessee needs no special operator on his premises. Calls between stations in the private branch exchange are operated the same as calls between any two telephones in the city. But calls coming in to the private branch exchange are handled through two or three numbered trunk circuits, and these trunks are the only ones listed in the city directory. However, cards are furnished to be placed near each telephone in the private branch exchange, listing the names and numbers in the exchange. These cards can be sent out by the lessee of the private branch exchange to parties he wishes to have them. The number of each telephone is not listed in the city directory for public use and are therefore secret numbers.

Yours respectfully,

MOORE TELEPHONE SYSTEM

Per W. J. MOORE, Gen. Mgr.

WJM:CLM

THIS TELEPHONE DIRECTORY

Printed By

TUSCOLA COUNTY ADVERTISER.

CARO, MICHIGAN

The Burroughs bookkeeping system we use does not write names. Therefore we give each town a number and on your toll bills these numbers will be used to indicate the town you talk to. You will, no doubt, occasionally talk to some remote town that we have no number for, and therefore in such case there will be no number shown on the bill, but these occasions will be rare.

Moore Telephone System

1 Akron	26 Decker	51 Lexington .	76 Pigeon
2 Avoca	27 Dryden	52 Lapeer	77 Peck
3 Alma	28 Davison	53 Marine City	78 Port Austin
4 Almont	29 Deckerville	54 Millington	79 Port Sanilac
5 Ann Arbor	30 Elkton	55 Marlette	80 Reese
6 Alpena	31 East Tawas	56 Mt. Pleasant	81 Rochester
7 Argyle	32 Emmet	57 Munger	82 Richmond
8 Bach	33 Flint	58 Mt. Morris	83 Romeo
9 Bad Axe	34 Postoria	59 Minden City	84 Richville
10 Bay City	35 Fairgrove	60 Mayville	85 Saginaw
11 Bay Port	36 Gagetown	61 Melvin	86 Sebawaing
12 Brown City	37 Grand Rapids	62 Monroe	87 Silverwood
13 Birmingham	38 Gifford	63 Memphis	88 Snover
14 Chesaning	39 Grayling	64 Marysville	89 Standish
15 Caro	40 Harbor Beach	65 Mt. Clemens	90 Sandusky
16 Clifford	41 Howell	66 Metamora	91 Toledo, Ohio
17 Crosswell	42 Holly	67 N. Branch	92 Ubyly
18 Columbiaville	43 Ionia	68 Owendale	93 Utica
19 Clare	44 Ithaca	69 Otter Lake	94 Unionville
20 Cass City	45 Inlay City	70 Owosso	95 Vassar
21 Carsonville	46 Jackson	71 Otisville	96 West Branch
22 Capac	47 Kinde	72 Orion	97 Wilmot
23 Chicago, Ill.	48 Kingston	73 Oxford	98 Yale
24 Deford	49 Kalamazoo	74 Pontiac	99 Ypsilanti
25 Detroit	50 Lansing	75 Port Huron	

CLASSIFIED CARO DIRECTORY, 1940

Abstract Office

Tuscola Co. Abstract Co., A. O. Purdy, Pres., St. Sav. Bldg. 413

Attorneys-at-Law

Hill, Guy G., office, McNair Block 350

Wills, Bates, office, McNair Block 357

Auto Parts

Caro Auto Parts, Ed. Lerman, opp. telephone office 305

Joe Stern's Auto Parts, 603 E. Frank St. 209

Beauty Shoppes

Dorothy Jeanne Shop, 216 N. State St. 204

Elite Beauty Shoppe, 227 N. State St. 226

Manke, Marguerite, Beauty Service, 243 S. State St. 314

Modern Beauty Shop, Gladys Montei, 130 Adams St. 113

Pearl's Beauty Shoppe, res., 146 W. Lincoln St. 283

Cleaners and Dyers

Eastham, Cleaners and Dyers 342

Joyce Cleaners, 125 Burnside St. 103

Thumb Laundry, Carl F. Mantey, 131 N. State St. 174

Coal and Coke (retail)

Caro Farmers' Co-op. Elev. Co., 416 Green St. 296-201

Forbes, W. A. Co., 429 Montague Ave. 482

Ind. Coal, Coke Co., Earl S. Cook, prop., near Frt Station 206

Druggists

Hooper, L. A., 128 N. State St. 202

Electrical Appliances

Caro Home Appliances, 227 N. State St. 347

Middaugh Electric Shop, 107 N. State St. 231

Sid's Electric Service, 267 N. State Street 276

CLASSIFIED CARO DIRECTORY 1940

Insurance Agents

Soley, Mrs. Mauda, 485 W. Franklin St., 1935
Thos. Henry, Mutual Fire Ins., 178
Michigan Mutual Liability Co., 171 Ave. 172 S. State St., 171

Lumber Dealers

Alwood, R. J., 605 N. State St., 385
Roper, W. A., Lumber & Coal Co., 159 Montague Ave., 483

Meat Markets

Truitt & Parsons, Meat Market, 109 S. State St., 401

Tricitation—

Mineral Vapor Bath, Massage, Electric Therapy and Gynecology

We Furnish One of These Directories

FOR EACH MOORE TELEPHONE

WITHOUT CHARGE

Additional Copies May Be Had for 35c Each

Geo. George, 222 S. State St., 200

Lawrence Service Store, 127 N. State St., 431

Out. Dr. E. C. 240 E. Grand St., 178